

Human CD155/PVR Protein

Cat. No. CD1-HM355



Description

Source	Recombinant Human CD155/PVR Protein is expressed from HEK293 with mFc (IgG1) tag at the C-Terminus.
	It contains Trp21-Asn343.
Accession	P15151-1
Molecular Weight	The protein has a predicted MW of 61.3 kDa. Due to glycosylation, the protein migrates to 75-100 kDa based on Tris-Bis PAGE result.
Endotoxin	Less than 1EU per µg by the LAL method.
Purity	> 95% as determined by Tris-Bis PAGE
	> 95% as determined by HPLC

Formulation and Storage

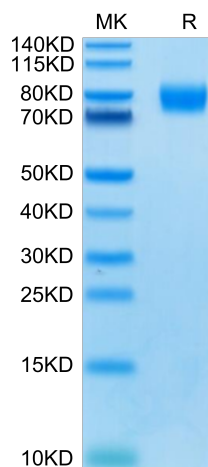
Formulation	Lyophilized from 0.22µm filtered solution in PBS (pH 7.4). Normally 8% trehalose is added as protectant before lyophilization.
Reconstitution	Centrifuge the tube before opening. Reconstituting to a concentration more than 100 µg/ml is recommended. Dissolve the lyophilized protein in distilled water.
Storage	-20 to -80°C for 12 months as supplied from date of receipt. -80°C for 3-6 months after reconstitution. 2-8°C for 2-7 days after reconstitution. Recommend to aliquot the protein into smaller quantities for optimal storage. Please minimize freeze-thaw cycles.

Background

CD155 is a cell surface adhesion molecule functioning in tumor cell migration, invasion, and metastasis, and not surprisingly, is also designated as a common tumor-associated antigen. CD155 is also recognized by NK cells to induce their cytotoxicity. CD155 is also commonly referred to as the "poliovirus receptor," or PVR.

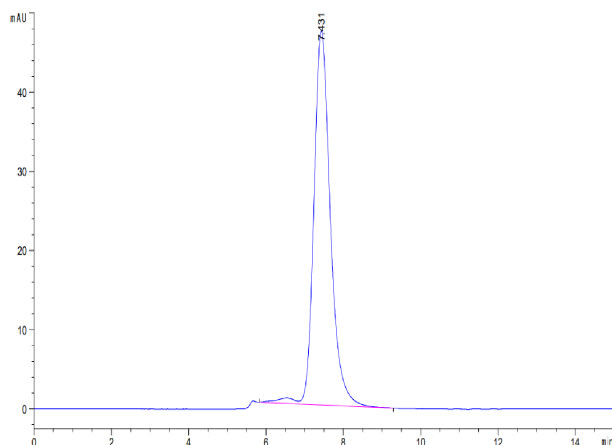
Assay Data

Tris-Bis PAGE



Human CD155 on Tris-Bis PAGE under reduced condition. The purity is greater than 95%.

SEC-HPLC

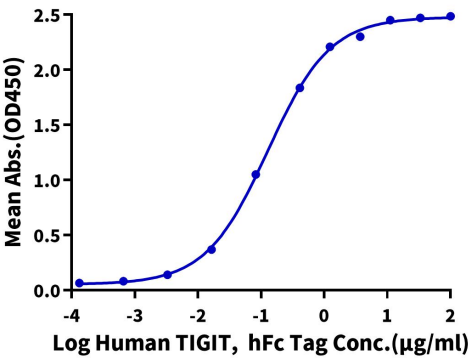


The purity of Human CD155 is greater than 95% as determined by SEC-HPLC.

Assay Data

ELISA Data

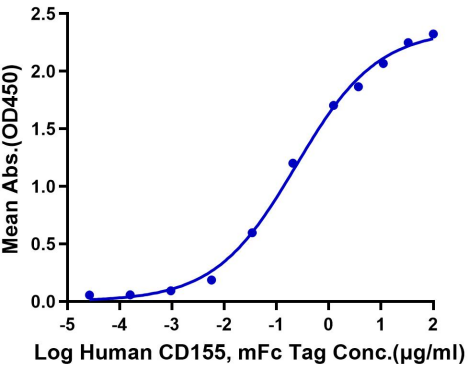
Human CD155, mFc Tag ELISA
0.2µg Human CD155, mFc Tag Per Well



Immobilized Human CD155, mFc Tag at 2µg/ml (100µl/well) on the plate. Dose response curve for Human TIGIT, hFc Tag with the EC50 of 0.13µg/ml determined by ELISA (QC Test).

ELISA Data

Human CD155, mFc Tag ELISA
0.2µg Human DNAM-1, His Tag Per Well



Immobilized Human DNAM-1, His Tag at 2µg/ml (100µl/well) on the plate. Dose response curve for Human CD155, mFc Tag with the EC50 of 0.24µg/ml determined by ELISA.